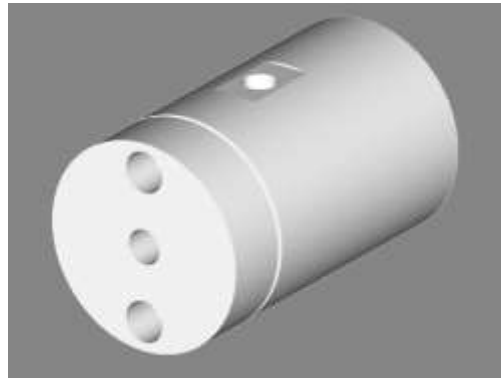


Guardian quick exhaust valves vent pneumatic valves and components within the liquid containment chamber.



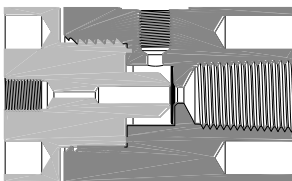
Guardian™ Quick Exhaust Valves

Assured Contamination Protection

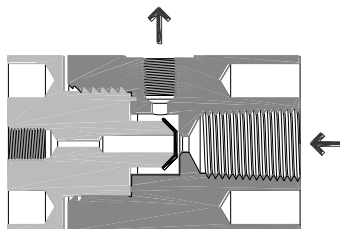
- 100% functional testing—superior performance
- Allows a controlled tool shutdown instead of a catastrophic shutdown in the event of pneumatic valve diaphragm failure
- Prevents contamination of house N₂ or CDA supply and protects system electronics from vapors or chemicals released from possible pneumatic valve diaphragm failures

Operation

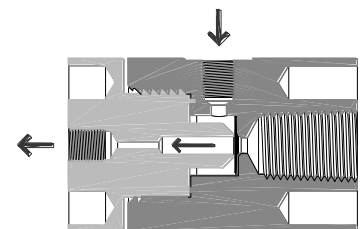
The valve's diaphragm flexes and allows the pneumatic supply to actuate the component. As the supply pressure begins to drop, the diaphragm closes the supply port and opens the exhaust port to vent. Potential liquid or vapor leaks are vented away from sensitive electronic and pneumatic components.



Valve at rest



Valve actuated



Valve exhausting

valves

Specifications

MATERIALS

- Housing: PVDF
- Fitting adapters: PVDF
- Diaphragm: Chemraz®

OPERATING

- Maximum temperature: 120°C (248°F)
- Minimum pressure: 10 psig
- Maximum pressure: 100 psig

VALVE ORIFICE SIZE

- Female Port: 0.088"

Ordering Information

To order, select the supply port, valve port and vent port configurations required.

PART NUMBER	SUPPLY PORT (INLET)	VALVE PORT (OUTLET)*	VENT PORT (OUTLET)
630-000	10-32 UNF Female*	10-32 UNF Female	10-32 UNF Female*
630-002	10-32 UNF Female*	10-32 UNF Female	1/8" Female NPT
630-200	1/8" Female NPT	10-32 UNF Female	10-32 UNF Female*
630-202	1/8" Female NPT	10-32 UNF Female	1/8" Female NPT

*A tubing adapter kit is included with each valve that has a 10-32 UNF connection. Each kit includes three barbed tube fittings for the following tubing: 1/16" I.D. tube, 3/32 I.D. tube, 1/8" I.D. tube, and 0.170" I.D. tube.

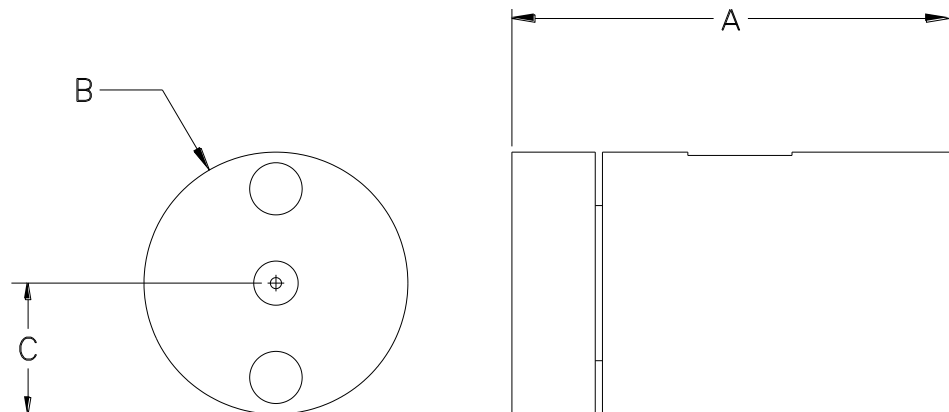
SPECIAL: Add **-01** to above part number for PTFE construction of valve housing tube adapter kit fitting are PVDF.

Installation Procedures

The valve should be inserted into the supply line tubing between the pneumatic supply source and valve or component to be actuated. Barb fittings are supplied for installation. The vent port should be directed to leak detection or drain.

Installation Drawing

	Inches	mm
A	1.58	40.1
B	∅ 0.95	∅ 24.1
C	0.48	12.2



U.S. Patents: 5565631, 5549277, 5381826, 5078004 • Others pending
 Futurestar®, Pathfinder®, Odyssey®, Sentinel® and AutoValve® are registered trademarks of Futurestar Corp.
 Super 300 Type Pillar Fitting® is a trademark of NIPPON PILLAR PACKING CO., LTD.

